

The Meter

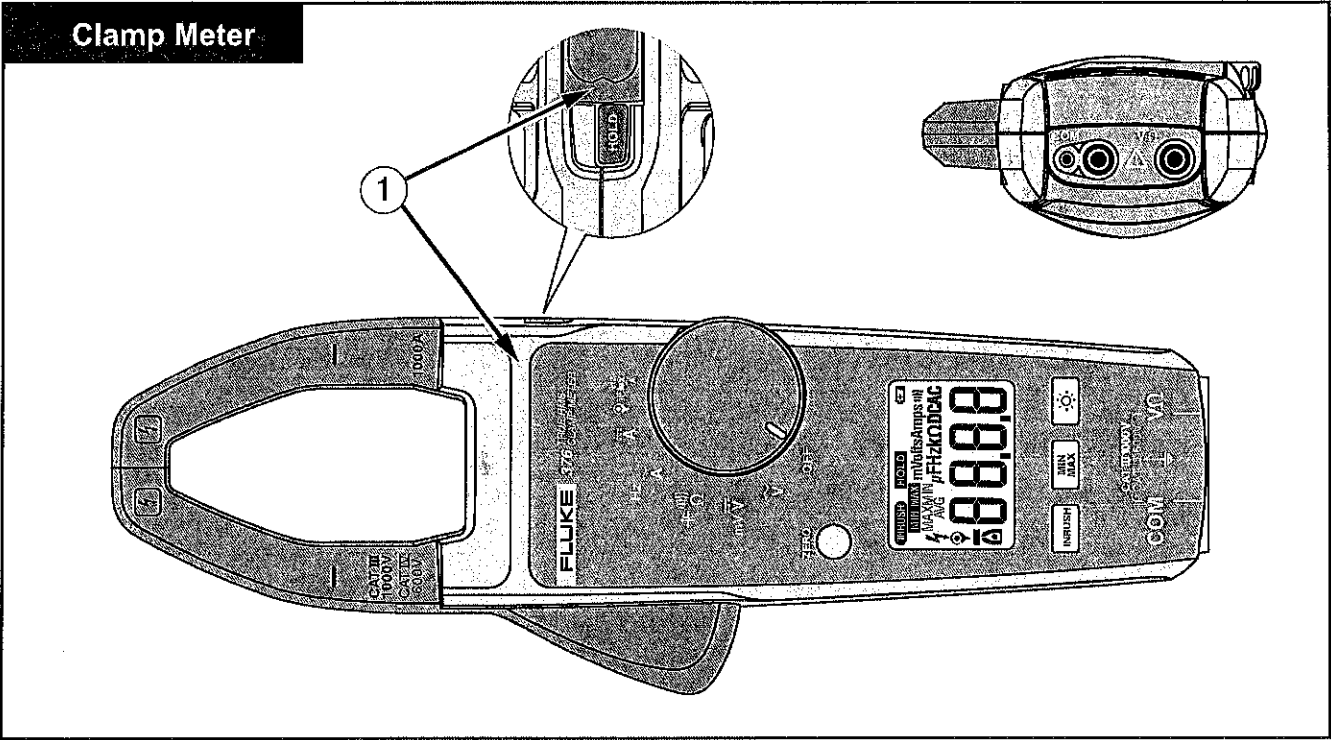


fig01.eps

**374, 375, 376**  
*Users Manual*

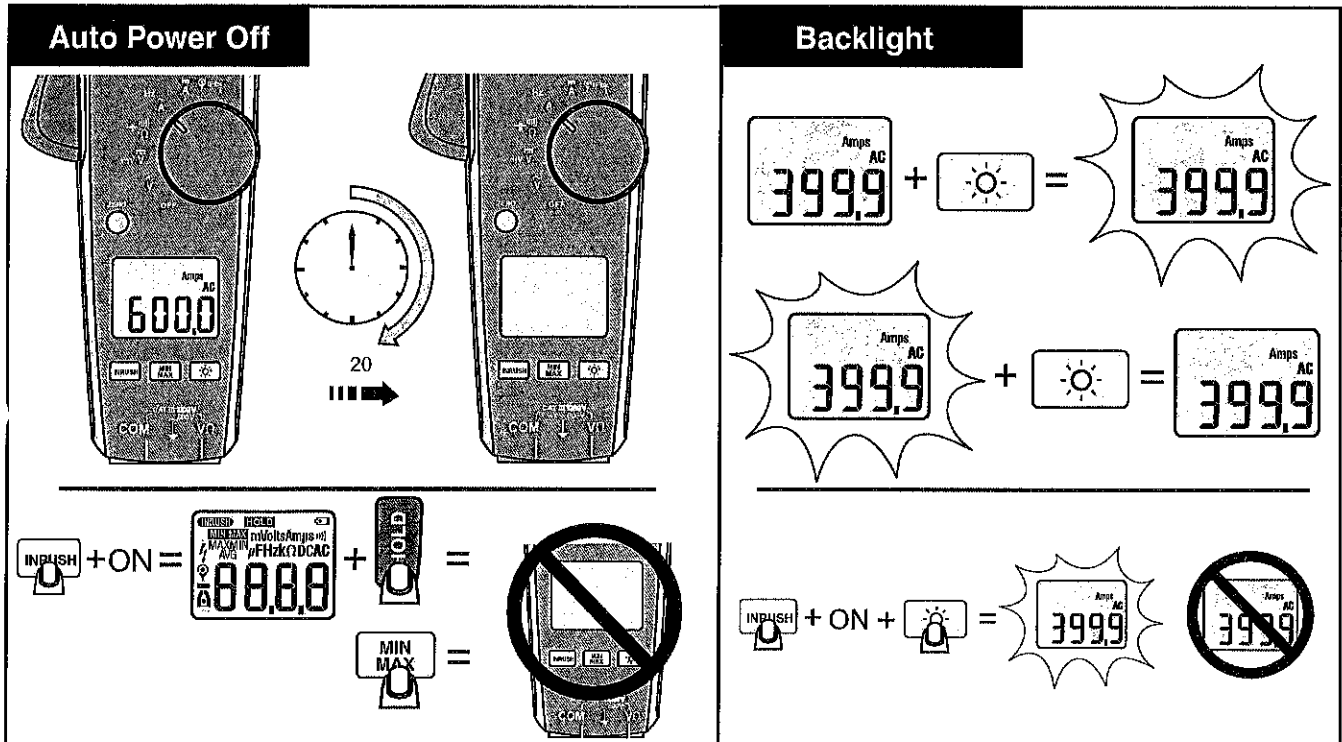


fig02\_3.eps

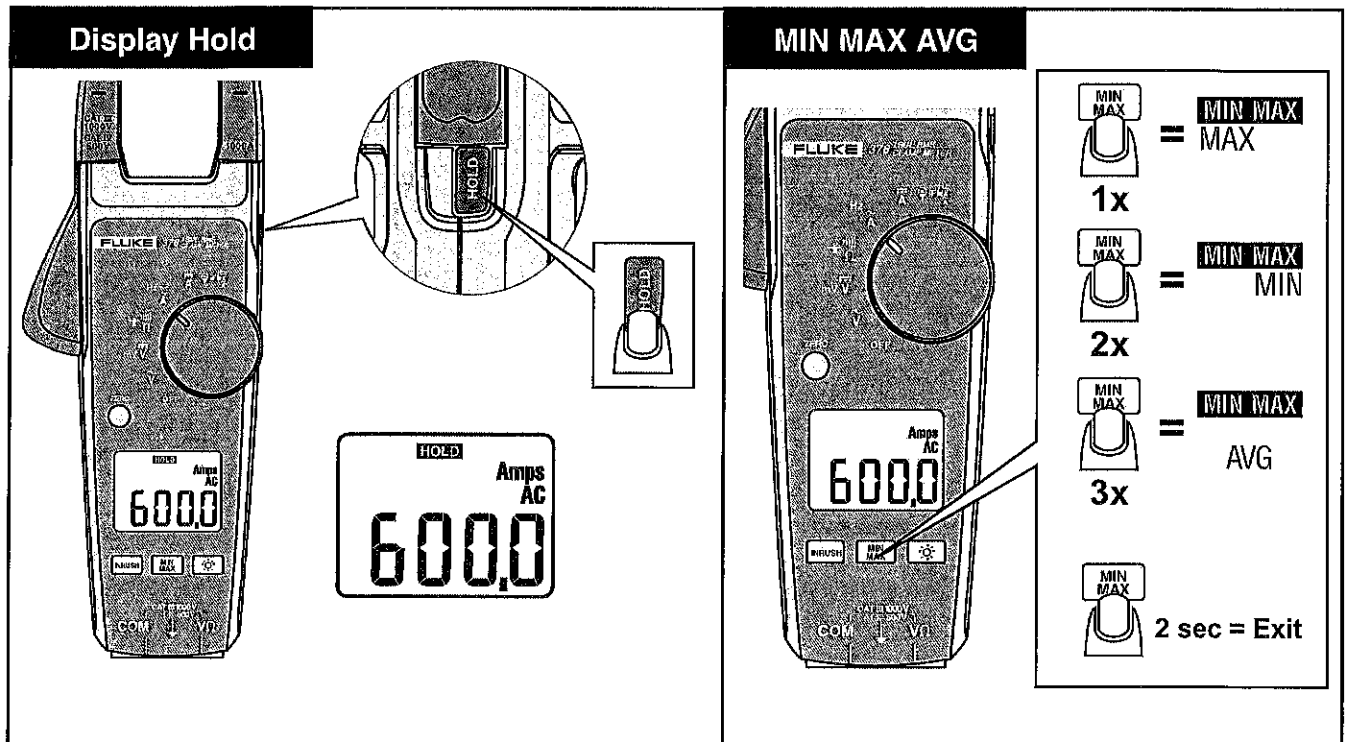


fig04\_5.eps

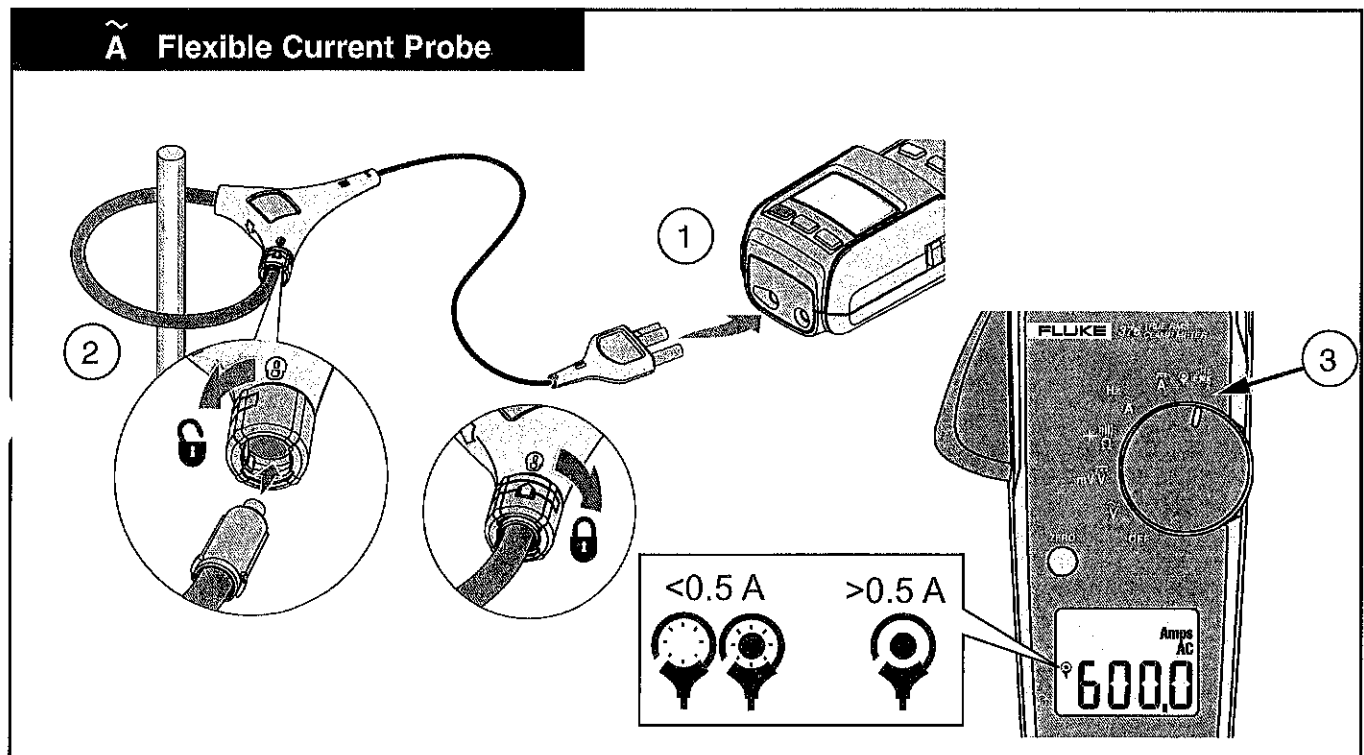


fig06.eps

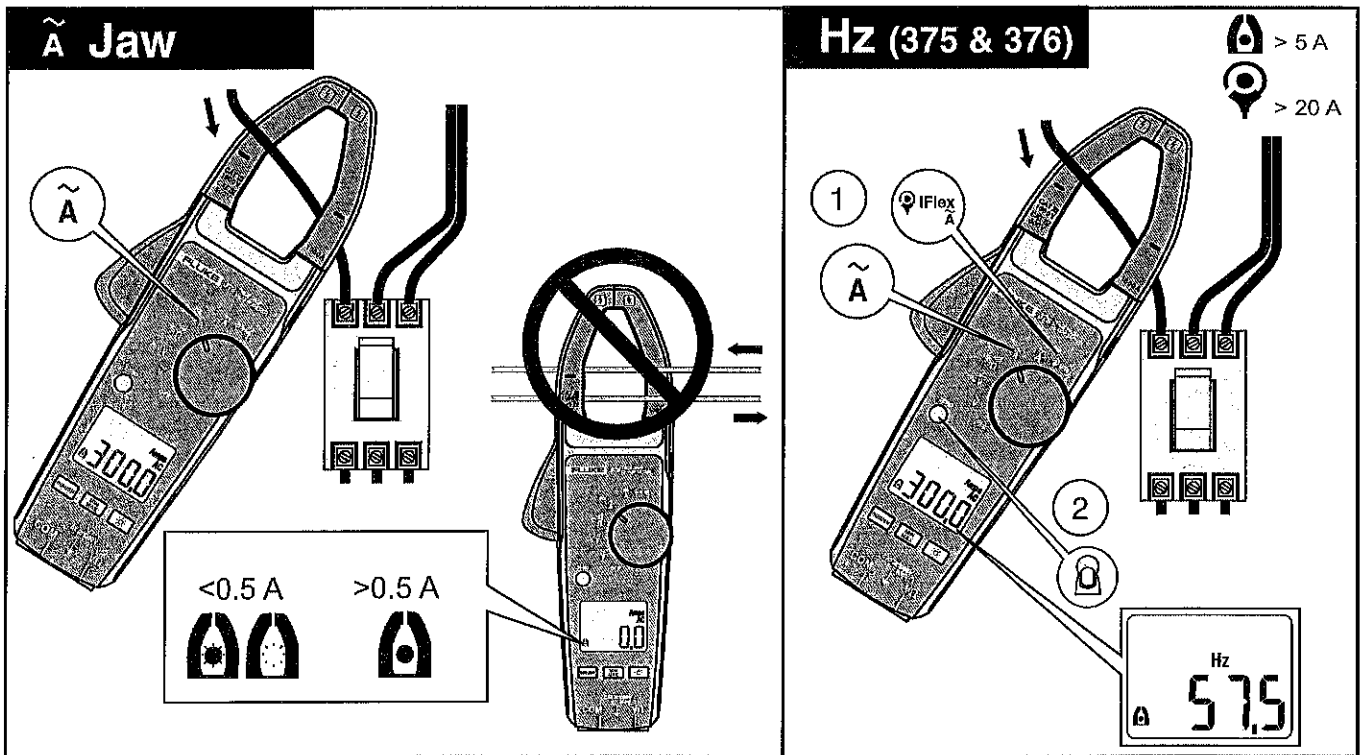


Fig07.eps

**374, 375, 376**  
*Users Manual*

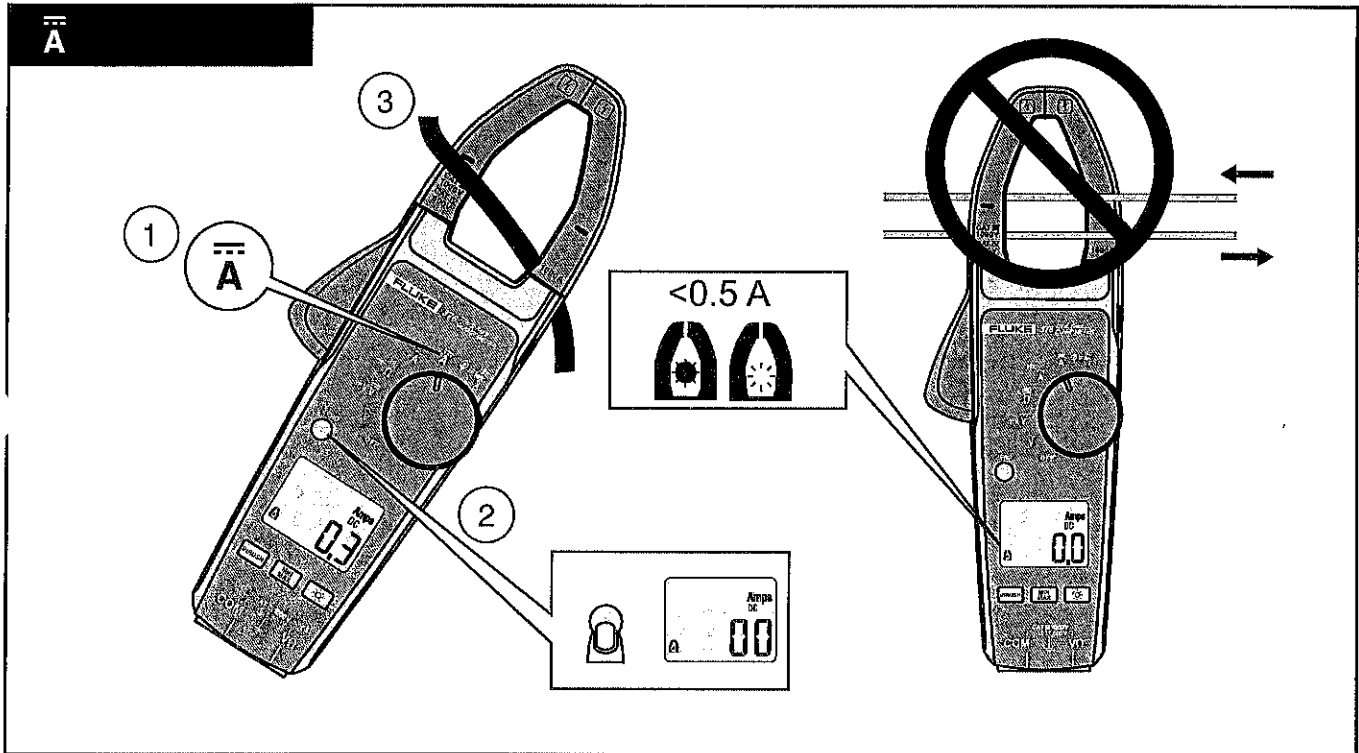


Fig08.eps

**Clamp Meters**  
*The Meter*

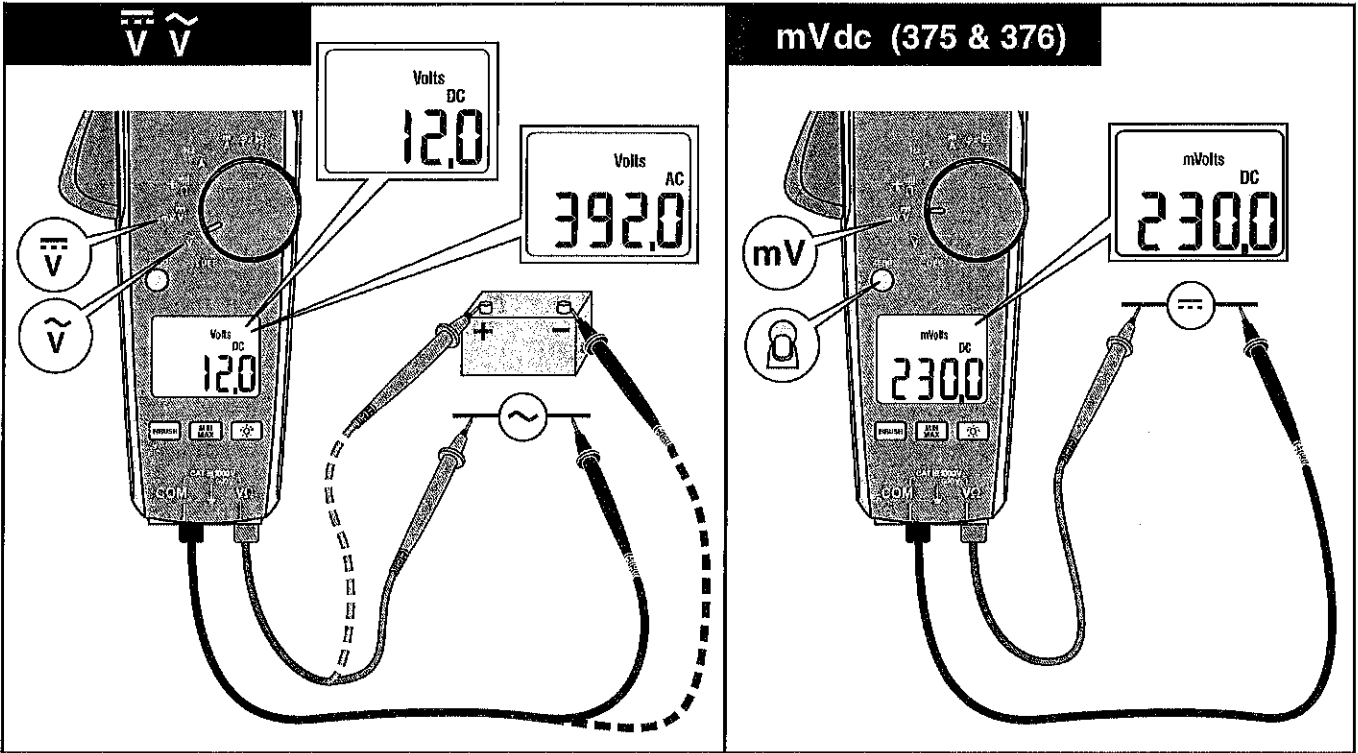


fig09\_10.eps

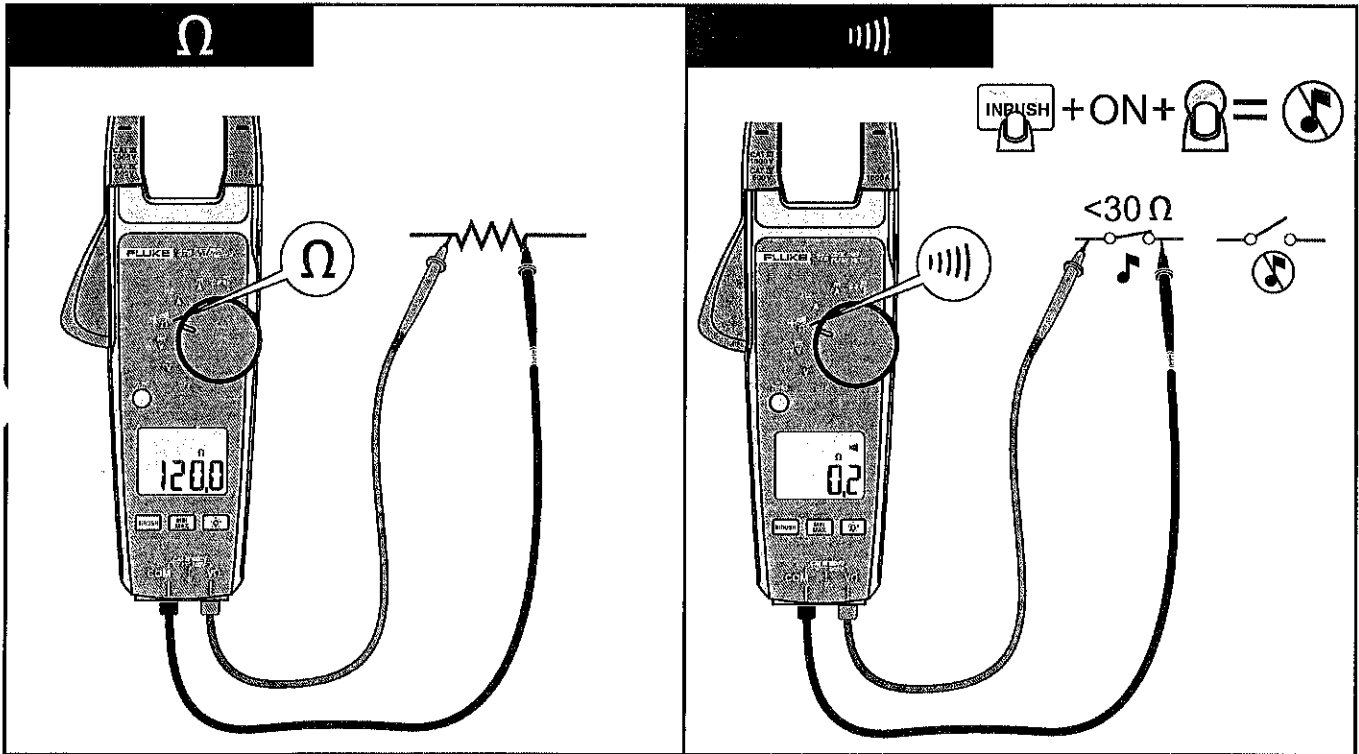


Fig15.eps



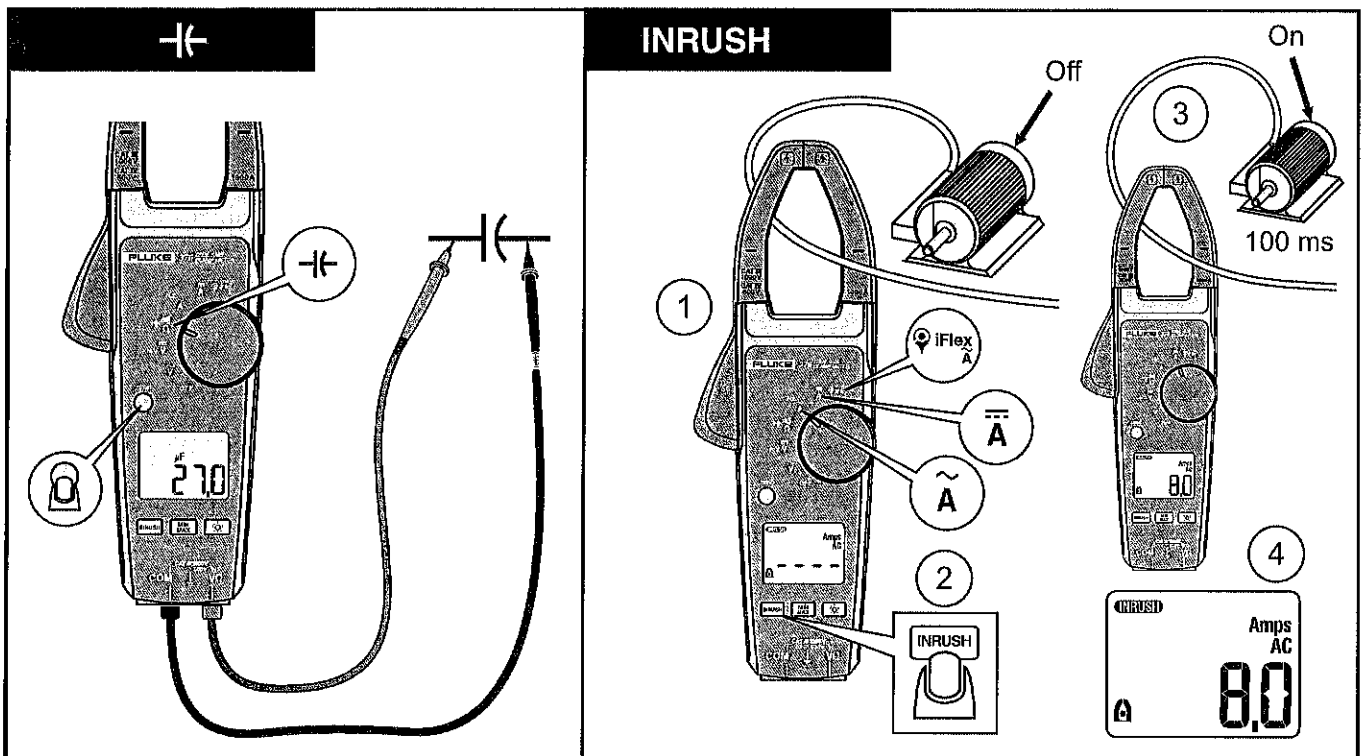


fig13\_14.eps

**374, 375, 376**  
*Users Manual*

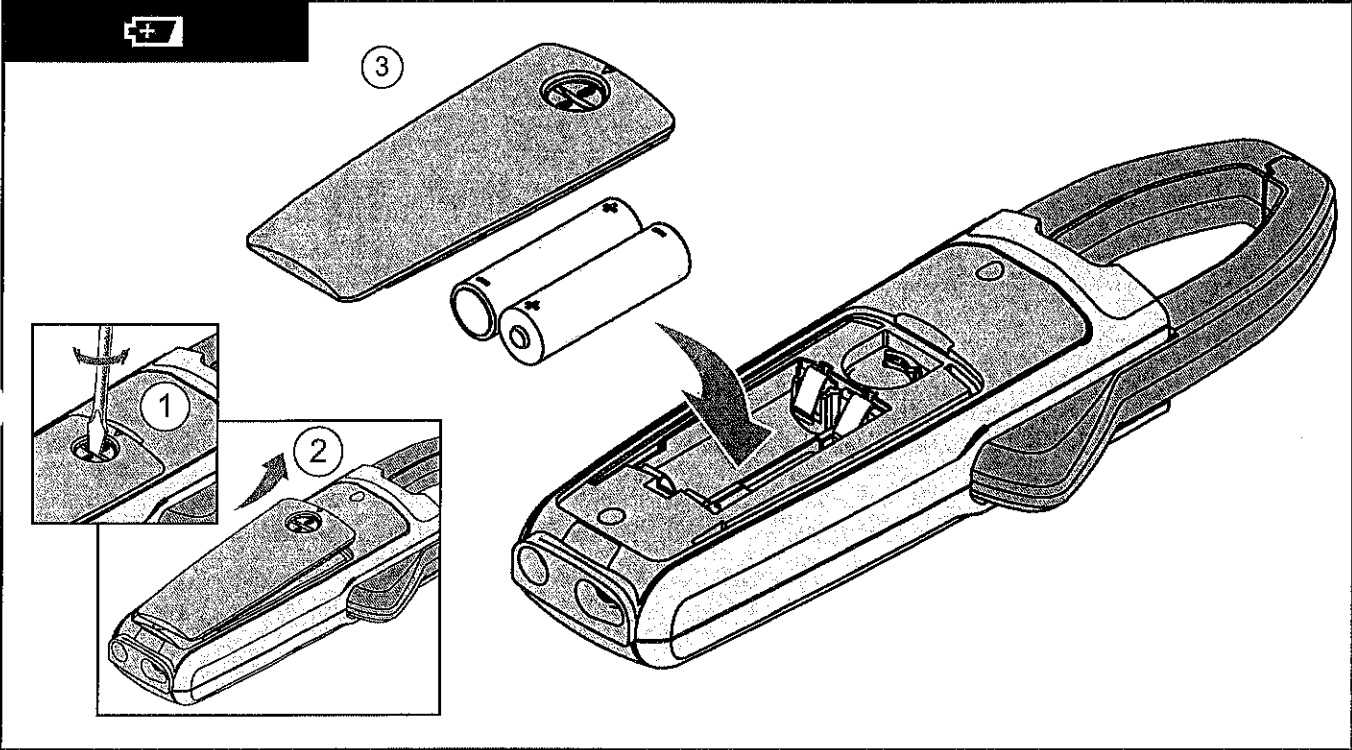


fig11\_12.eps

## **Specifications**

### **Electrical Specifications**

#### *AC Current via Jaw*

##### Range

374 and 375 ..... 600.0 A

376..... 999.9 A

Resolution ..... 0.1 A

Accuracy ..... 2 %  $\pm$  5 digits (10-100 Hz)

2.5 %  $\pm$  5 digits (100-500 Hz)

Crest Factor (50/60 Hz) ..... 3 @ 500 A (375 and 376 only)

2.5 @ 600 A

1.42 @ 1000 A (376 only)

Add 2 % for C.F. > 2

**374, 375, 376**  
*Users Manual*

---

*AC Current via Flexible Current Probe*

Range ..... 2500 A

Resolution

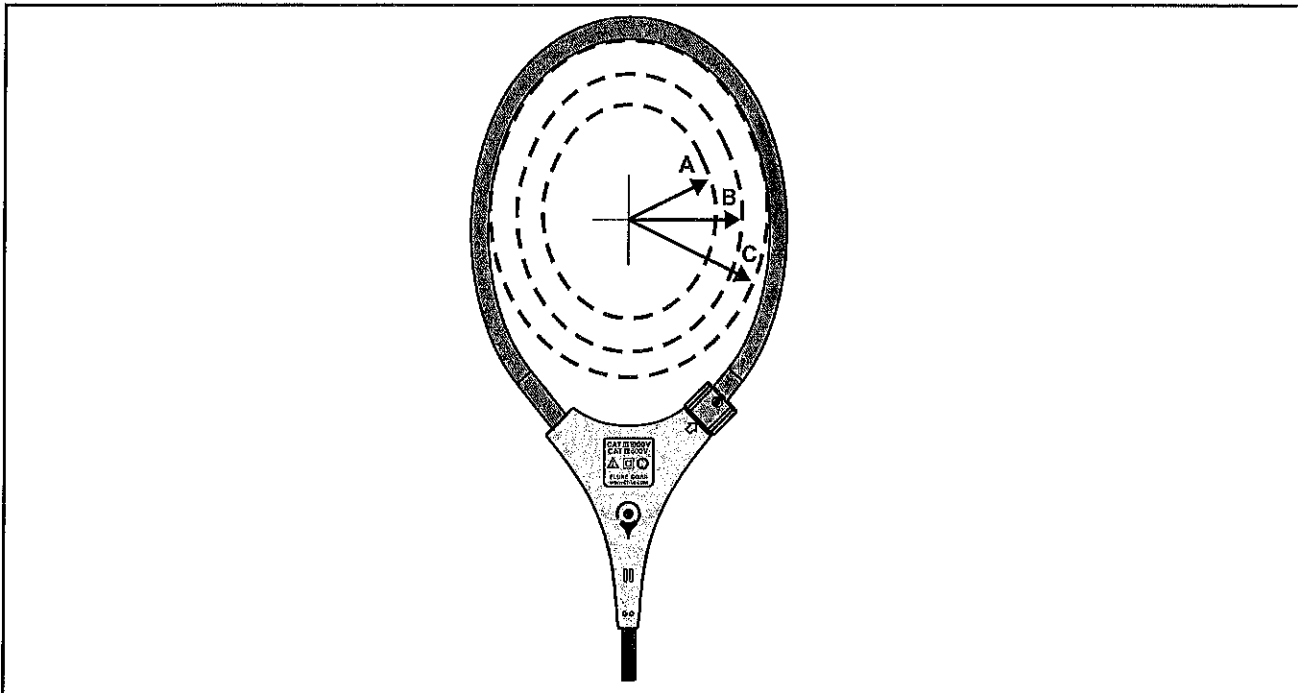
374 and 375 ..... 0.1 A ( $\leq 600$  A)  
1 A ( $\leq 2500$  A)

376 ..... 0.1 A ( $\leq 999.9$  A)  
1 A ( $\leq 2500$  A)

Accuracy ..... 3 %  $\pm 5$  digits (5 – 500 Hz)

Crest Factor (50/60Hz) ..... 3.0 at 1100 A (375 and 376 only)  
2.5 at 1400 A  
1.42 at 2500 A  
Add 2 % for C.F. > 2

*Position Sensitivity*



ghn12.eps

**Figure 1. Position Sensitivity**

**374, 375, 376**  
*Users Manual*

<b>Distance from Optimum</b>	<b>i2500-10 Flex</b>	<b>i2500-18 Flex</b>	<b>Error</b>
A	0.5 in (12.7 mm)	1.4 in (35.6 mm)	± 0.5 %
B	0.8 in (20.3 mm)	2.0 in (50.8 mm)	± 1.0 %
C	1.4 in (35.6 mm)	2.5 in (63.5 mm)	± 2.0 %

Measurement uncertainty assumes centralized primary conductor at optimum position, no external electrical or magnetic field, and within operating temperature range.

*DC Current*

Range

374 and 375 ..... 600.0 A

376..... 999.9 A

Resolution..... 0.1 A

Accuracy ..... 2 % ± 5 digits

*AC Voltage*

Range

## Clamp Meters Specifications

---

374 and 375 ..... 600.0 V

376 ..... 1000 V

### Resolution

374 and 375 ..... 0.1 V

376 ..... 0.1 V ( $\leq 600.0$  V)

1 V ( $\leq 1000$  V)

Accuracy ..... 1.5 %  $\pm$  5 digits (20 – 500 Hz)

### DC Voltage

#### Range

374 and 375 ..... 600.0 V

376 ..... 1000 V

**374, 375, 376**  
*Users Manual*

---

Resolution

374 and 375 .....	0.1 V
376 .....	0.1 V ( $\leq 600.0$ V)
	1 V ( $\leq 1000$ V)

Accuracy ..... 1 %  $\pm$  5 digits

*mV dc*

Range

375 and 376..... 500.0 mV

Resolution ..... 0.1 mV

Accuracy ..... 1 %  $\pm$  5 digits

*Frequency via Jaw*

Range

375 and 376..... 5.0 - 500.0 Hz

Resolution ..... 0.1 Hz

Accuracy ..... 0.5 %  $\pm$  5 digits



## Clamp Meters Specifications

---

Trigger Level ..... 5 – 10 Hz,  $\geq 10$  A  
10 – 100 Hz,  $\geq 5$  A  
100 – 500 Hz,  $\geq 10$  A

### *Frequency via Flexible Current Probe*

#### Range

375 and 376 ..... 5.0 – 500.0 Hz

Resolution ..... 0.1 Hz

Accuracy ..... 0.5 %  $\pm$  5 digits

Trigger Level ..... 5 – 20 Hz,  $\geq 25$  A  
20 – 100 Hz,  $\geq 20$  A  
100 – 500 Hz,  $\geq 25$  A

### *Resistance*

#### Range

374 ..... 6000  $\Omega$

375 and 376 ..... 60 k $\Omega$

**374, 375, 376**  
*Users Manual*

---

Resolution

374.....	0.1 $\Omega$ ( $\leq$ 600 $\Omega$ )
	1 $\Omega$ ( $\leq$ 6000 $\Omega$ )
375 and 376.....	0.1 $\Omega$ ( $\leq$ 600 $\Omega$ )
	1 $\Omega$ ( $\leq$ 6000 $\Omega$ )
	10 $\Omega$ ( $\leq$ 60 k $\Omega$ )

Accuracy ..... 1 %  $\pm$  5 digits

*Capacitance*

Range .....	1000 $\mu$ F
Resolution.....	0.1 $\mu$ F ( $\leq$ 100 $\mu$ F)
	1 $\mu$ F ( $\leq$ 1000 $\mu$ F)
Accuracy .....	1 % $\pm$ 4 digits

***Mechanical Specifications***

Size (L x W x H) .....	246 mm x 83 mm x 43 mm
Weight.....	388 g
Jaw Opening.....	34 mm

Flexible Current Probe Diameter ..... 7.5 mm

Flexible Current Probe Cable Length

(head to electronics connector)..... 1.8 m

***Environmental Specifications***

Operating Temperature.....-10 °C – +50 °C

Storage Temp .....-40 °C – +60 °C

Operating Humidity ..... Non condensing (< 10 – °C)

≤ 90 % RH (at 10 °C – 30 °C)

≤ 75 % RH (at 30 °C – 40 °C)

≤ 45 % RH (at 40 °C – 50 °C)

Operating Altitude ..... 3000 meters

Storage Altitude ..... 12,000 meters

EMC ..... EN 61326-1:2006

Temperature Coefficients..... Add 0.1 x specified accuracy for each degree C above  
28 °C or below 18 °C

**374, 375, 376**  
*Users Manual*

---

*Safety Specifications*

Safety Compliance..... CAN/CSA-C22.2 No. 61010-1-04  
ANSI/UL 61010-1:2004  
ANSI/ISA-61010-1 (82.02.01):2004  
EN/IEC 61010-1:2001 to  
1000V Measurement Category (CAT) III  
600V Measurement Category (CAT) IV  
Pollution Degree 2  
EN/IEC 61010-2-032:2002  
EN/IEC 61010-031:2002+A1:2008



*Agency Approvals*.....



Batteries..... 2 AA, NEDA 15A, IEC LR6